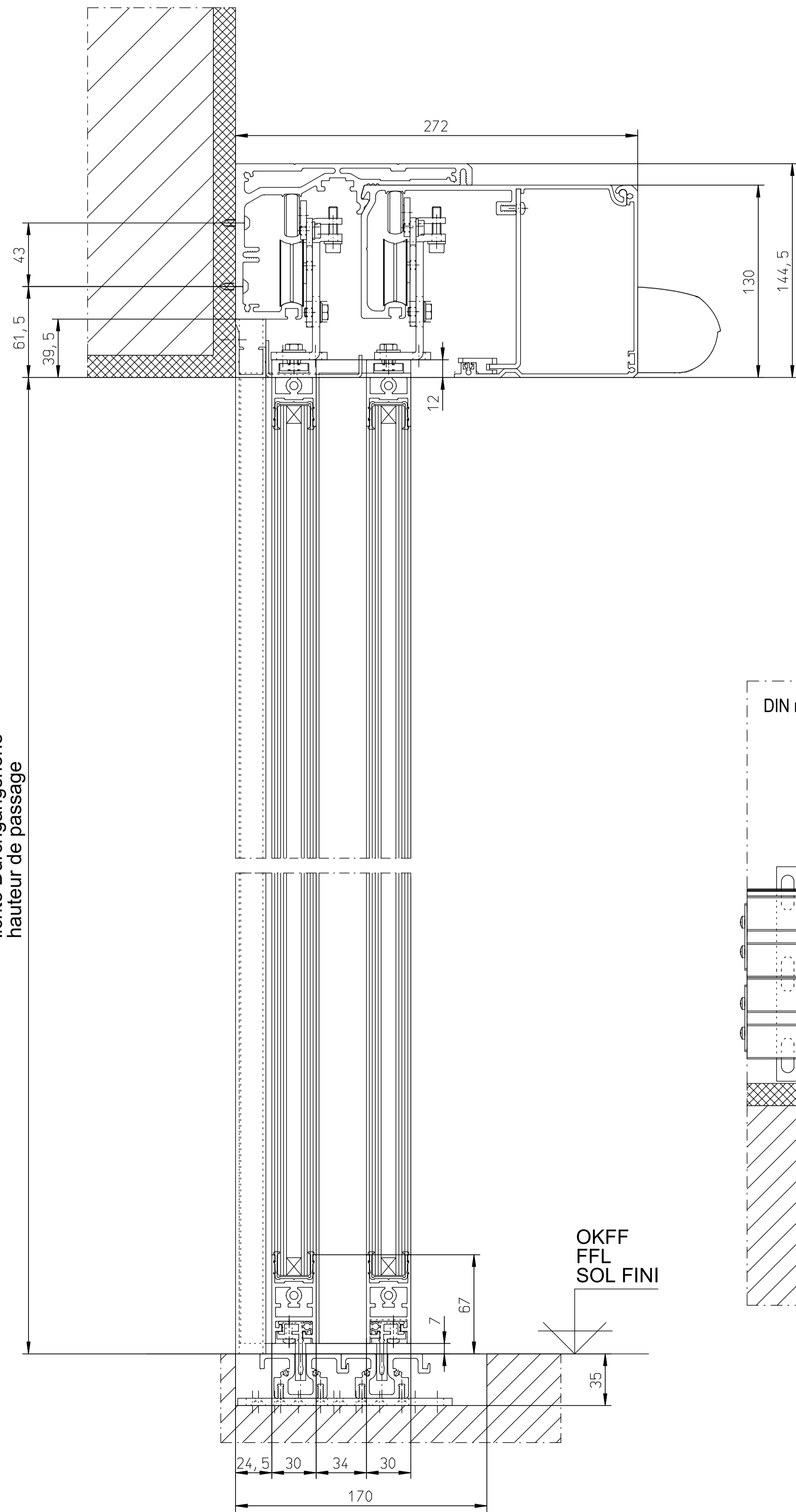
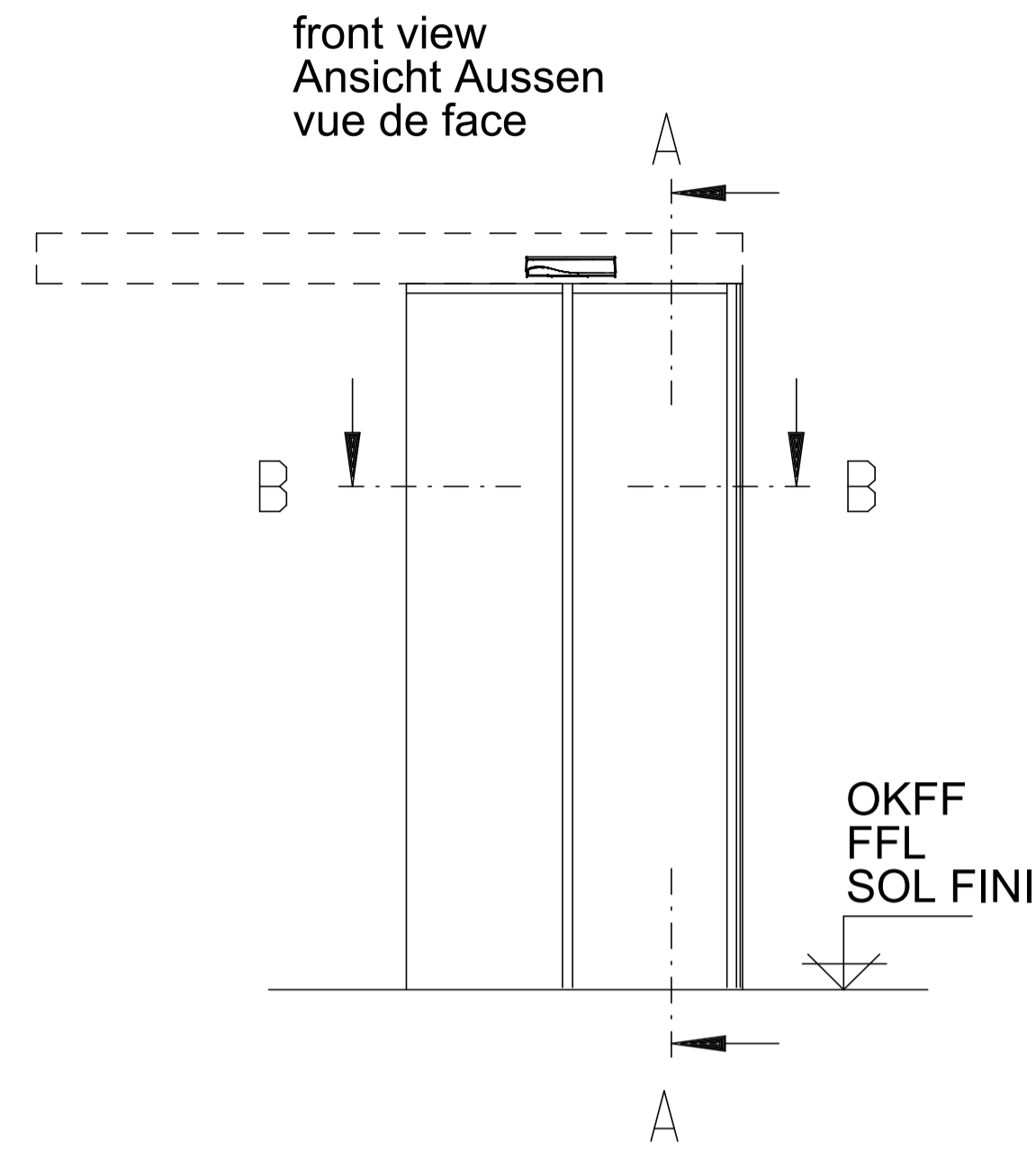


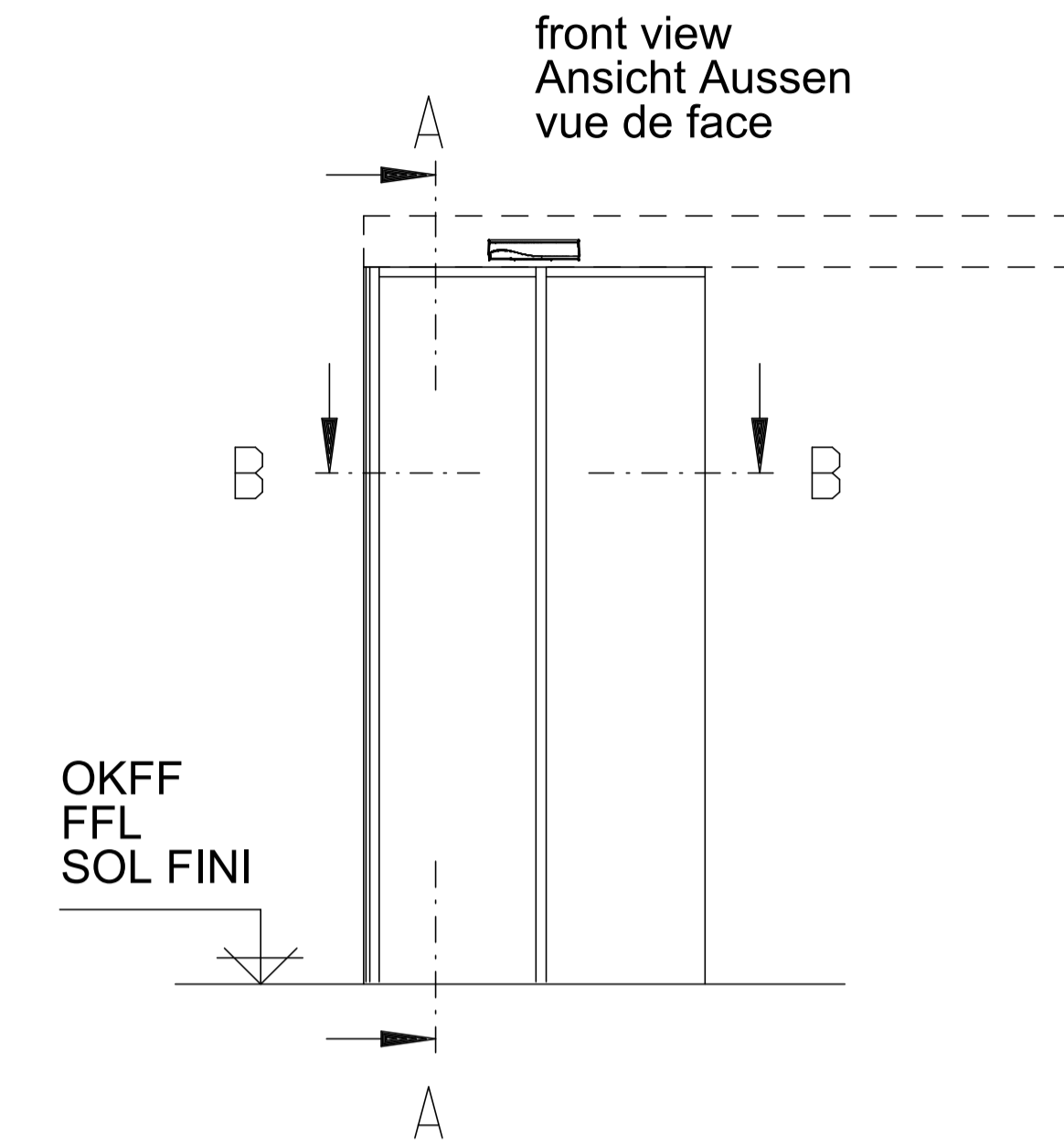
# A - A



## DIN rechts / rechts öffnend

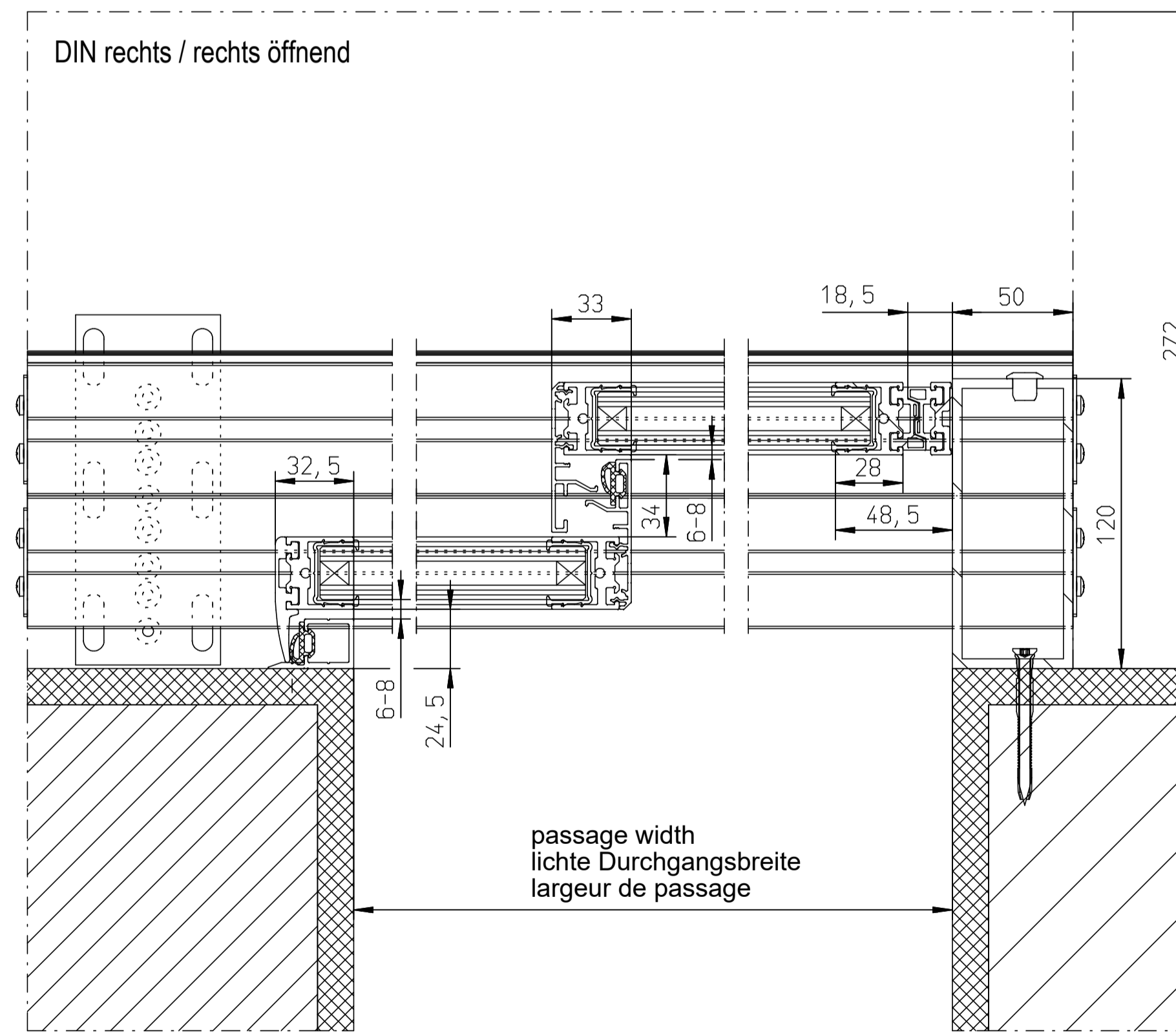


## DIN links / links öffnend



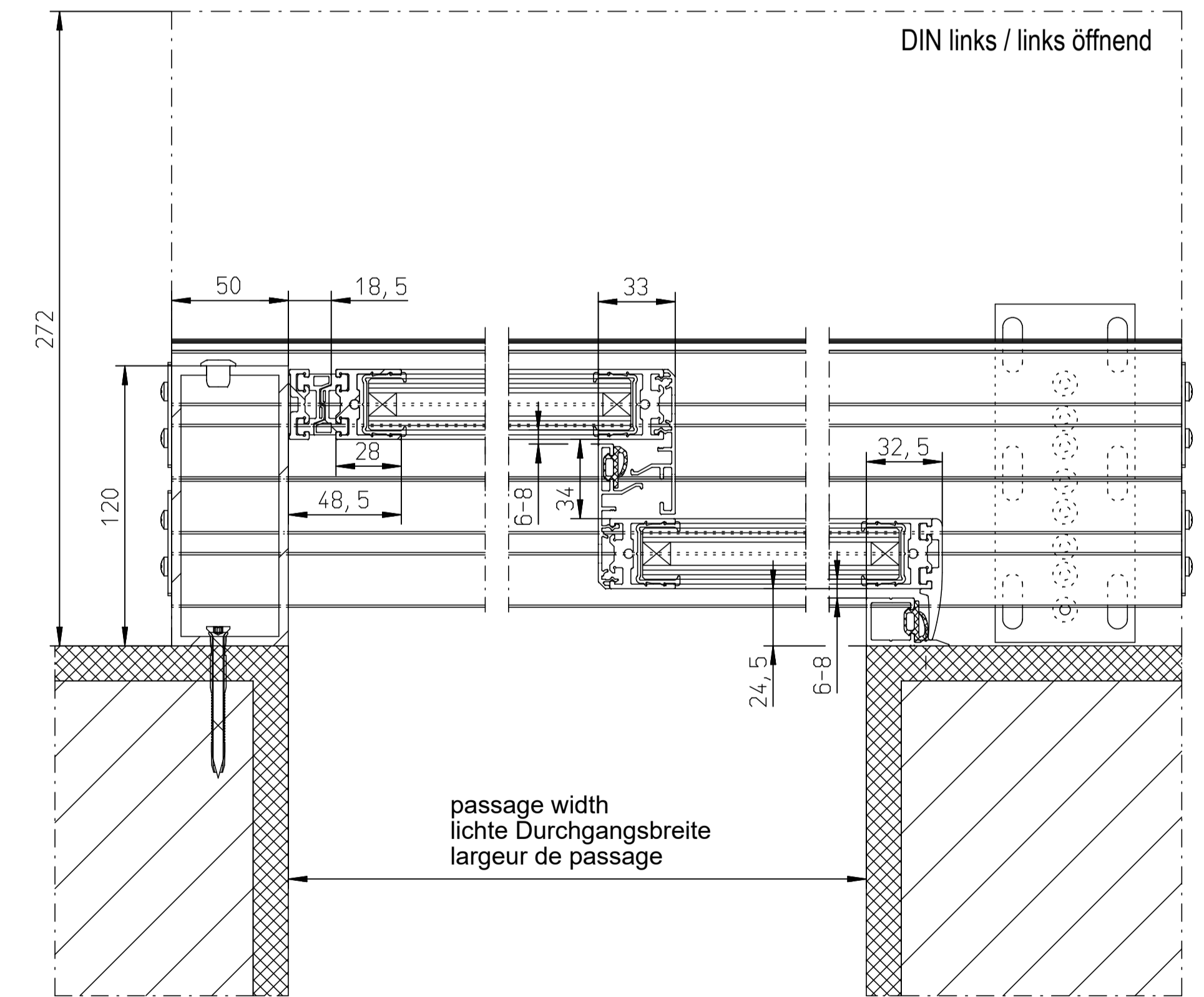
# B - B

cover / Antriebsverkleidung / capot



# B - B

cover / Antriebsverkleidung / capot



passage height  
lichte Durchgangshöhe  
hauteur de passage

Surface treatment	Material	Scale	1:2
Tolerance	Mass Weight (g) Part No.	Date	22.10.2020
Type	EMT/EMTF-MW	Edt.	Janbar
Proprietary rights apply in accordance with ISO 16016		Norm	
Description		Level	Revision
-Profilsystem G30- 2-flügelig		Date	Name
-Profile system G30- 2 door leaves		Drawing No.	A-9905250-2
GU Automatic GmbH		Sheet	1