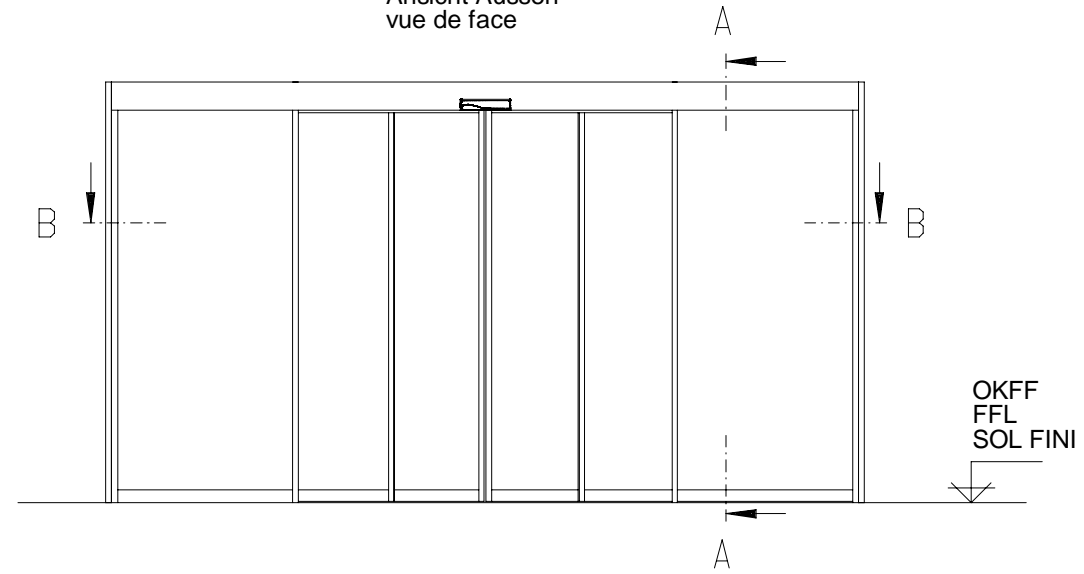


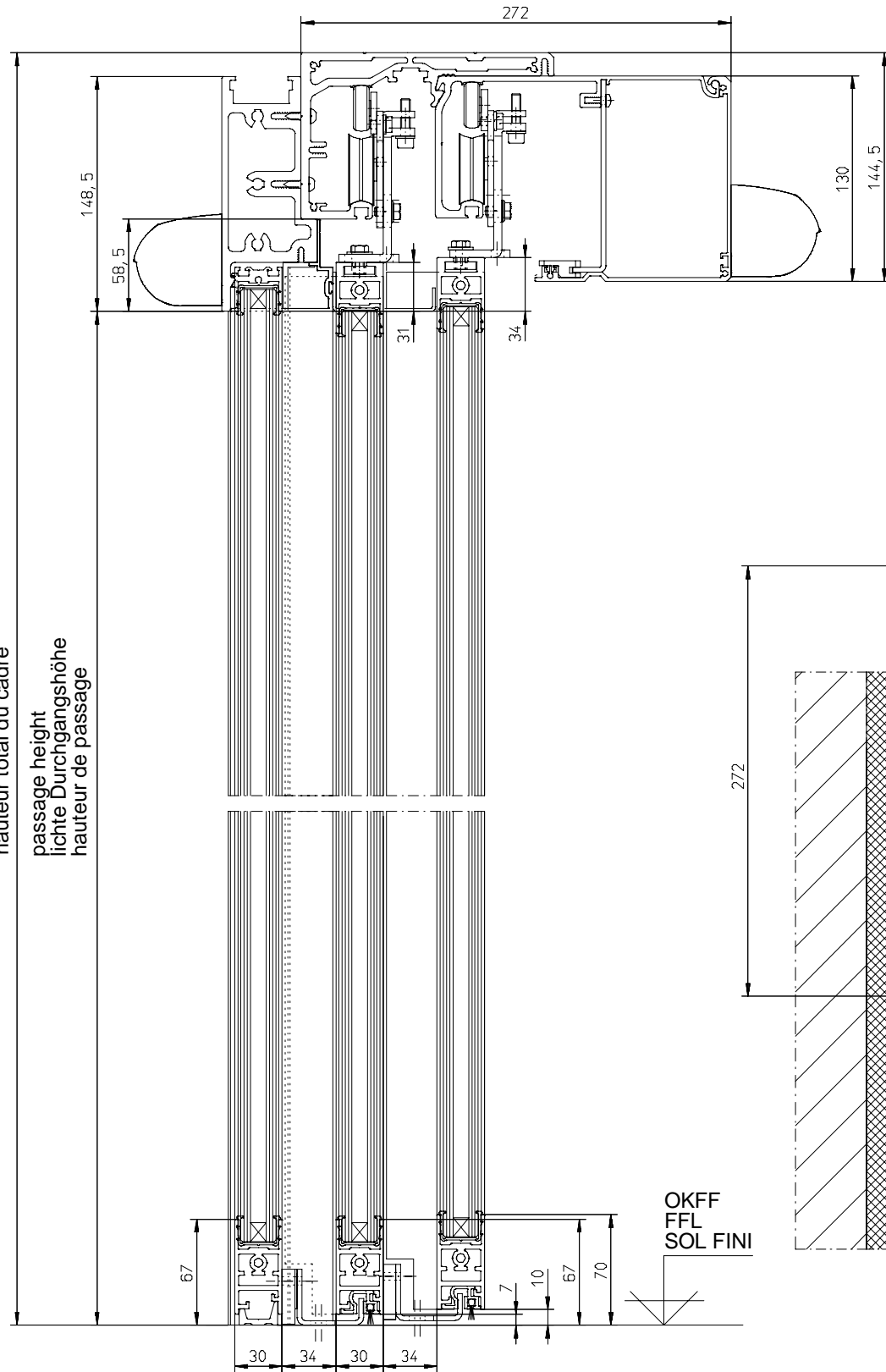
front view
Ansicht Aussen
vue de face

A - A



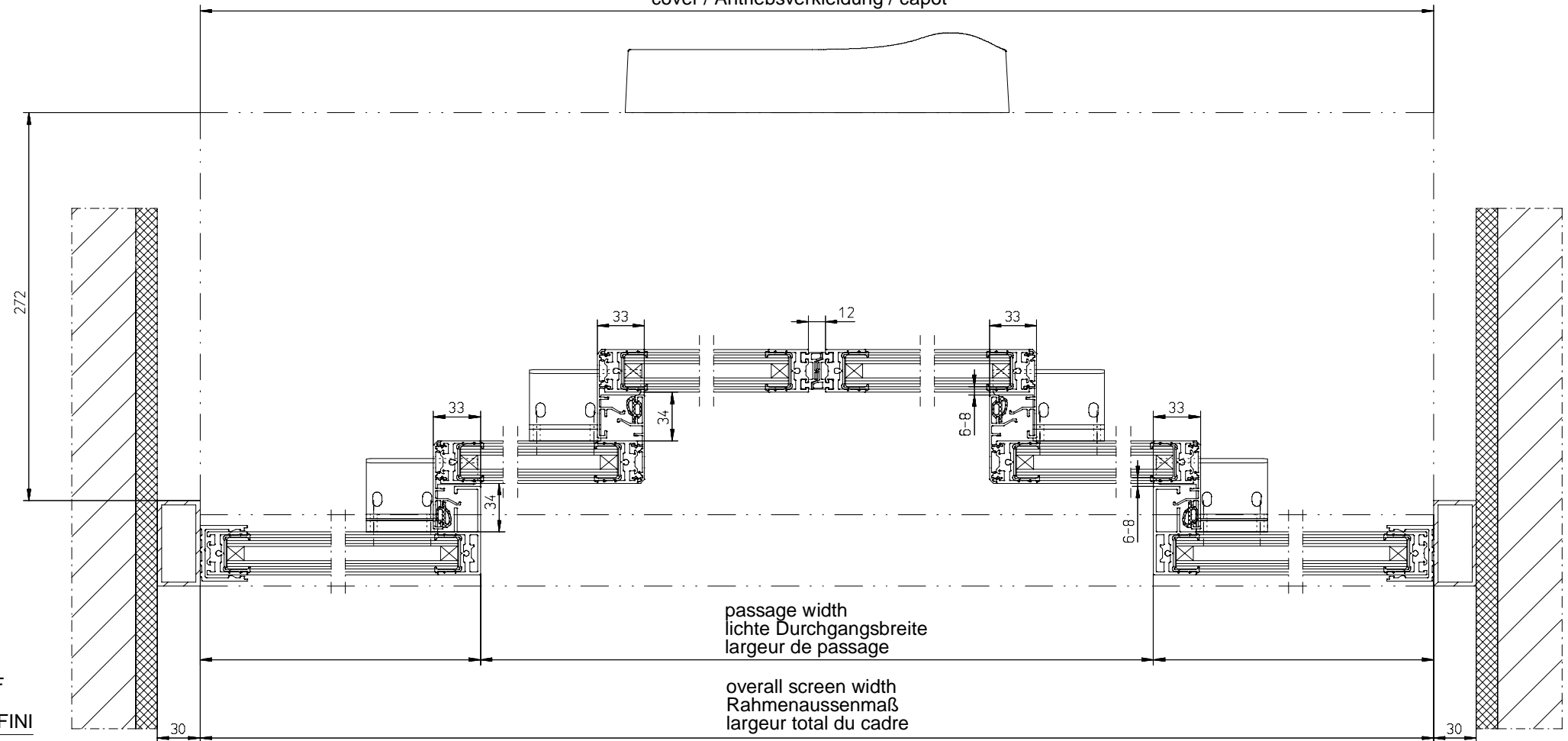
overall screen height
Rahmnaussenmaß
hauteur total du cadre

passage height
lichte Durchgangshöhe
hauteur de passage



B - B

cover / Antriebsverkleidung / capot



OKFF
FFL
SOL FINI

passage width
lichte Durchgangsbreite
largeur de passage

overall screen width
Rahmnaussenmaß
largeur total du cadre

Surface treatment	Material	Scale		
Tolerance	Mass Weight (kg)	Part No.	Date	Name
		EMT/EMTF-ST	Edt.	21.02.2020
Type	Norm	Design No.	Design by	Design by
Proprietary rights apply in accordance with ISO 10076				
GU GU Automatic GmbH www.gu-automatic.com	Description -Profilsystem G30- 4-flügelig -Profile system G30- 4 door leaves	Level	Revised	Date
		Drawing No.		Sheet
		A-9905020-1		1